

# Large Scale Greenway Investment in Connecticut

East Coast



Greenway<sup>®</sup>  
ALLIANCE

ECGA Southeast Summit  
Durham, NC  
October 2, 2017





***“Connecticut is paving the way for innovative, large investments in bicycle and pedestrian facilities, emphasizing the East Coast Greenway.”***

- Background
- Protagonists
- Budgeting
- New Programs
- Outcomes



# Background

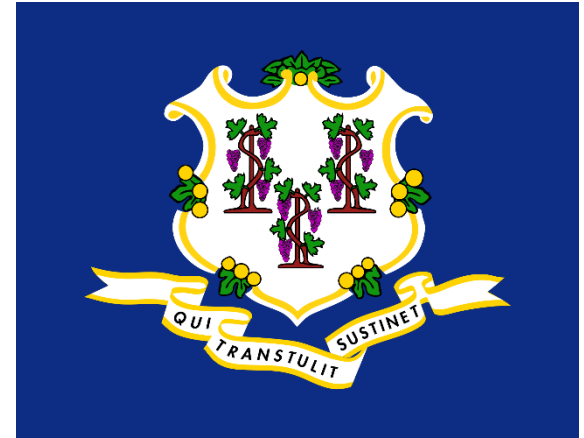
## CT at a Glance...

Population: 3,576,452 (#29)

Per Capita Income: \$72,000 (#1)

Area: 5,544 sq. mi. (#48)

Taxes 12.8% (Tied #1)



No County Government

169 "fiefdoms"

Veto-Proof Legislature (20 yrs D)

But Changed Now: R Gains –

Senate Tied – Lt. Gov. can Vote

House has many more R Reps



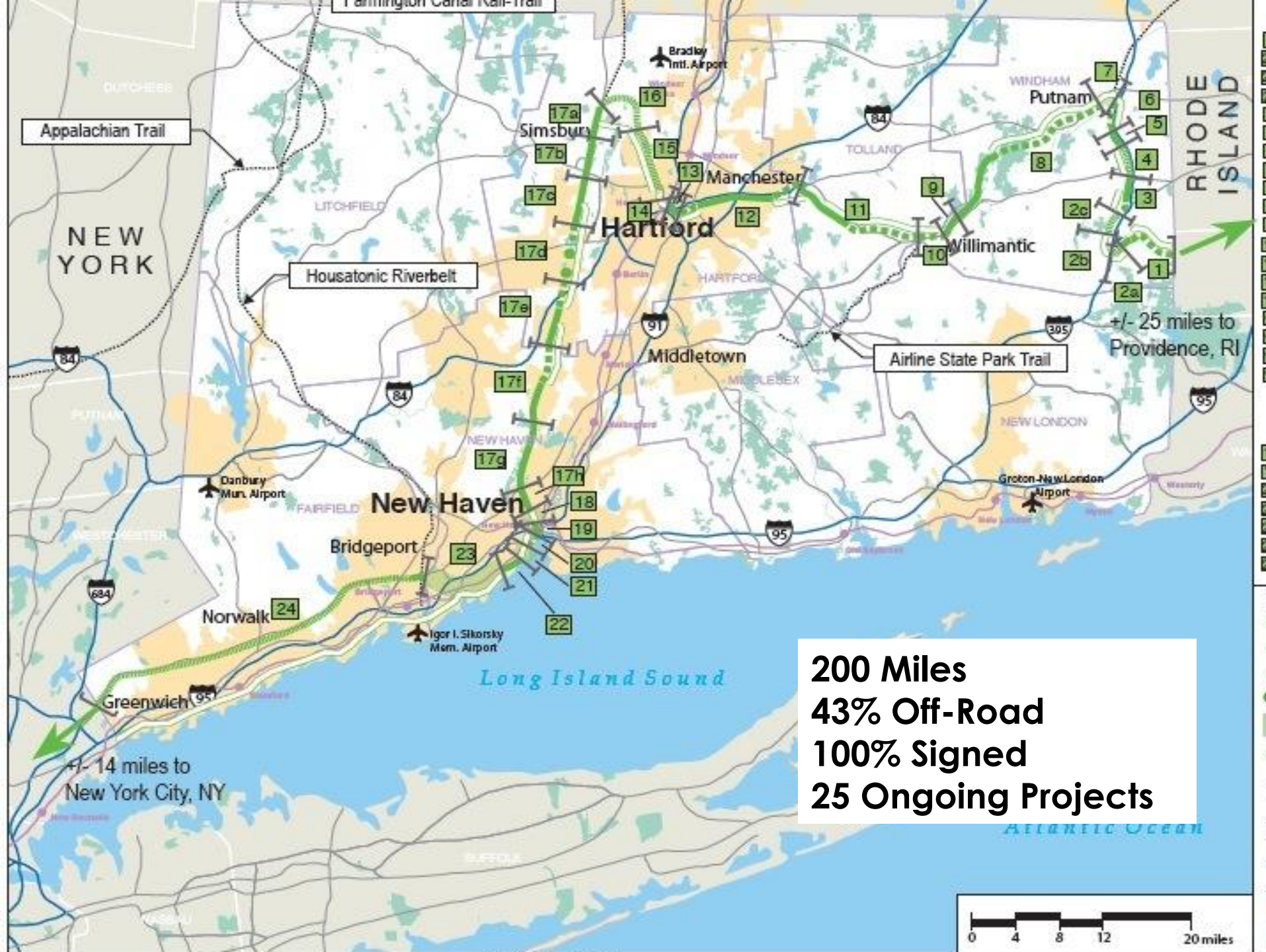
# Background

## Political Abstract: Hugely Positive

- ✓ Up until the last election 7 years of expanded budgeting for bike/ped facility development.
- ✓ Unprecedented support for trails pushed by local advocates and championed by elected officials.
- ✓ But only 14 months remain in this cycle.
- ✓ Continuous tax increases leave Gov. Malloy with 2<sup>nd</sup> lowest approval rating in U.S. (26%) He will not seek a 3<sup>rd</sup> term.
- ✓ Things Will Change...







# Connecting NY to CT



# Who? Protagonists

Governor Dannel P. Malloy – Mayor of Stamford fought for trails

Commissioner of DOT James P. Redeker – Transit background

Commissioner of DEEP, Robert Klee – Lover of the Outdoors

Councils of Government “COGs” are CT’s MPOs – Gateways

Legislatively Appointed Boards – CGC; BBPAB

Strong Advocacy – ECGA; FVTC, B/WCT, Many Others

Communities – Trail Support Critical from Citizens & Town Staff

Elected Officials – Trail Building is Community Building







# The golden years of building trails in CT

- ✓ Commissioner of DOT James P. Redeker and Governor Dannel P. Malloy teamed up over the last 7 years to promote and build the ECG in CT.
- ✓ Why?







## Why? A linear park for everyone:

- ✓ Now integral part of transportation policy in CT
- ✓ Provide “active” transportation opportunities
- ✓ Linear parks are the new public meeting space
- ✓ The healthy option
- ✓ Provide pollution and noise abatement
- ✓ Fantastic community amenities
- ✓ Foster tourism & economic development
- ✓ Quick return on investment – demographics help
- ✓ Low cost & ROI vs. roads, transit, and rail



# Budgeting from the Top



## Governor Dannel P. Malloy – A New Transportation Budget



Let'sGoCT! is Governor Malloy's transportation "Call to Action" – He believes that it's time to make the critical investments Connecticut needs. This program represents a 30-year vision for Connecticut's best in class transportation system. Signed into law by the General Assembly in 2015, this \$2.8 Billion 5-year Ramp-Up Program consists of 34 programs for Roadway, Rail, Bus, & Bike/Ped, which receives a minimum \$10M a year.





# Non-Traditional Funding Ideas

## CTDOT – Multi-Purpose Trails **LET'SGOCT!**

This new program focuses on closing the gaps in CT's major trail corridors with particular emphasis on firstly the East Coast Greenway spine and secondly, other regional trail systems.

Another new program is separate funding of **\$6M toward trail maintenance** in this corridor.

Funding (in \$):

	<u>Planned</u>	<u>Allocated</u>
2017	12.3M	14.9M
2018	12.7M	
2019	13.0M	
2010	11.2M	







# Non-Traditional Funding Ideas

## CTDOT – Community Connectivity Grants

New program that makes community centers more bikeable and walkable. Helps pay for a variety of projects that enhance mobility, safety, and access. Special focus on retrofitting CT's transportation system to include road safety audits, sidewalks, intersections, ADA accommodations, bike lanes, sharrows, and signage.

Funding (in \$):

	<u>Planned</u>	<u>Allocated</u>
2016	3.2M	3.2M
2017	2.1M	2.1M
2018	12.1M	
2019	12.6M	
2010	15.0M	



# Non-Traditional Funding Ideas



## CT Dept. of Energy & Environmental Protection's CT Recreational Trails Program:

- ✓ Established by the CT Legislature to provide funding to any private nonprofit organizations, municipalities, state departments and tribal governments in support of trail projects including:
- ✓ Planning, design and construction of new trails.
- ✓ Maintenance and restoration of existing trails.
- ✓ Access to trails by persons with disabilities.
- ✓ Purchase and lease of trail construction and maintenance equipment.
- ✓ Acquisition of land or easements for a trail, or for trail corridors.
- ✓ Operation of educational programs to promote safety and environmental protection as related to recreational trails.
- ✓ Grant amounts vary, and can pay up to 80% of total project costs, a 20% match is required.



# Non-Traditional Funding Ideas



A unique \$5 million a year CT State RTP: CT Legislature voted \$5M a year for ten years to replace the federal program which allowed only \$900K with twice the paperwork. Only state in the U.S. that has rejected this funding. Projects vetted by the CT Greenways Council, a legislatively appointed body. Much expanded ability to fund design & feasibility!

Funding (in \$):

	<u>Planned</u>	<u>Allocated</u>	<u>Match</u>	<u>Total</u>
2016	5.0M	6.7M	1.7M	8.4M
2017	5.0M	300K		
2018	??			







# More Traditional Funding

The regional MPOs in CT are Councils of Governments or COGs, who dictate which projects get in line at CTDOT for federal “TA” funds.

The Fixing America's Surface Transportation (FAST) Act replaced the former Transportation Alternatives Program (TAP) with a set-aside of funds under the Surface Transportation Block Grant Program (STBG). For administrative purposes, the Federal Highway Administration (FHWA) refers to these funds as the TA Set-Aside. Over 90% of the multi-use trails in CT were funded through this program. These \$\$ should survive after 2020.

## **Others likely to survive:**

- ✓ Recreational Trails Program (RTC)
- ✓ Congestion Mitigation & Air Quality Imp. (CMAQ)



# Outcomes: CTDOT ECG Trails

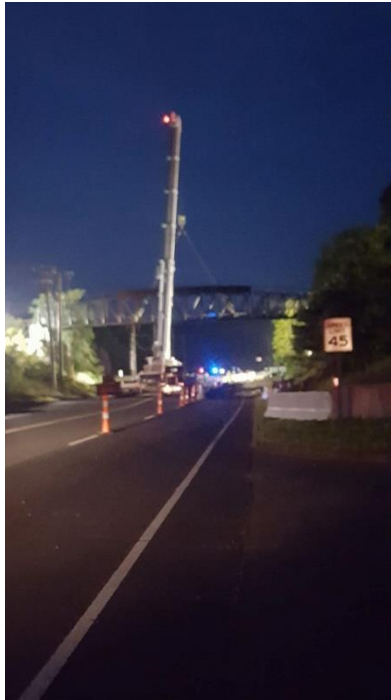
20 projects for 2017-18 alone:

<b><u>2017</u></b>				
FCHT- Farmington	Multi- Use	2.39	Red Oak Hill Rd South to Northwest Dr.	2017
FCHT - Southington	Multi- Use	0.55	SRS/NE 50' south of bridge to Curtiss St.	Done
FCHT - New Haven	Multi- Use	0.19	Temple to Grove Street Cycle Track	Done
Bushnell Park Connector	Multi- Use	0.21	Gold St. Cycletrack & Atheneum Way	Done
Great River Park Path	Multi- Use	1.5	E. Hartford IV to Founder's Bridge	Done
Charter Oak - Manchester	Multi- Use	0.76	Camp Meeting Rd to Finley St over RT 44/6	Done
Hop River	Stone Dust	0.5	to King's Rd. Willimantic	Done
Hop River	Multi- Use	0.15	Windham - Hop River Bridge Replacement	Done
Air Line State Park Trail	Stone Dust	3	Putnam - Pomfret RT 44 toward Willimantic -	2017
		<b>9.25</b>		
<b><u>2018</u></b>				
Moosup Valley	Stone Dust	6	Moosup Center to RI State Line	2018
Hop River	Multi- Use	1.99	Bolton - Finley St. -Hop River Trail Start	2018
Hop River	Multi- Use	0.83	Columbia - Hop River State Park Trail	2018
Hartford/Windsor Riverwalk 1	Multi- Use	2.6	Boathouse to just S of Meadow Brook	2018
FCHT - Southington	Multi- Use	0.95	Lazy Lane to West Queen	2018
FCHT - Southington	Multi- Use	0.1	Curtiss/Hart Sts. Intersection Project.	2018
FCHT - Southington	Multi- Use	0.35	West Queen St. to Town Line Rd.	2018
FCHT - Cheshire	Multi- Use	0.66	Phase 3 - Cornwall to West Main	2018
FCHT - New Haven	Multi- Use	1.5	Phase IV, Yale to Long Wharf - Mile 0	2018
Bloomfield Greenway	Multi- Use	1.91	RT 189 over Griffin Brook (Griffin Line)	2018
Tariffville Connector 1	Multi- Use	0.6	RT 315 at FCHT to Curtiss/Pattison Park	2018
		<b>17.49</b>		



# Outcomes: CTDOT Projects

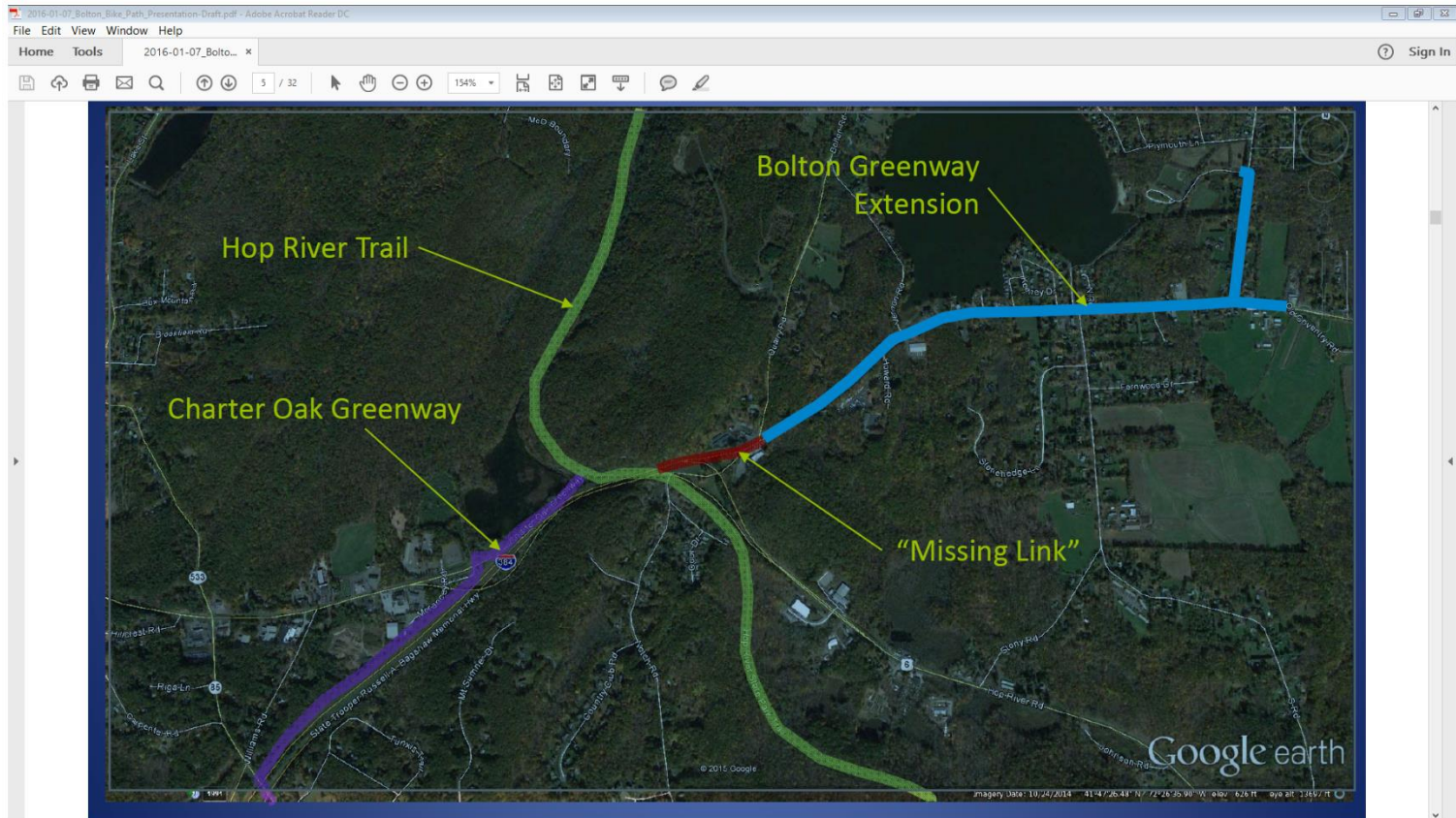
For the first time ever, in 2016, CT funded a multi-use trail project using no federal dollars. The Farmington Canal Heritage Trail (Farmington: Phase II), part of the ECG, is 2.39 miles long, 14' wide asphalt, and features a 135' bridge over a major highway. Project Cost: \$5.1M





# Outcomes: CTDOT Projects

In 2017, The last remaining gap in the Hop River Trail (EGC) in Bolton was recently fully funded by the state. This 2-mile gap includes an enormous bridge complex that spans another major highway system. Project Cost \$14.9M



# Outcomes: CTDEEP RTC

## **41 CTDEEP sponsored greenway projects in total, 2016-17**

Between March, 2016 and October, 2017 DEEP State Parks worked with the CT Greenways Council to award 41 active municipal and non-profit projects and multiple state park and forest projects totaling \$8.4 million in grants to build, expand, or enhance greenways and multi-use trails in more than half of all communities across the state.

### **Results to Date**

- ✓ All 41 are underway in record time
- ✓ 5 are completed
- ✓ 12 are over 50% completed
- ✓ Most of the rest will be completed by 2018



# Outcomes: CTDEEP RTC

DEEP Recreational Trails Grants			
Applicant	Project Title	Description	Grant Amount
Berlin	Pistol Creek Trail Upgrades	Addition of Handicapped Accessible parking. Conversion of 0.25 miles to HC accessible; repaving and erosion repair to 1.7 miles; new 0.07 mile paved bypass; interpretive signage and wayfinding	\$125,580.00
Burlington	Farmington River Trail	Purchase of maintenance equipment	\$20,608.00
Colchester	Design of Link Trail to ASPT	Connection to the Goodwin Trail in Babcock Wildlife Management Areas then to the system of trails in Day Pond, which in turn connects to the Air Line State Park Trail	\$43,200.00
Coventry	Mill Brook Greenway	2800 foot extension; stonedust trail and on-road sections connecting Town open space with the Willimantic River - CT Designated Blueway	\$57,560.00
CT Forest & Park	BBHT System & CT Trails Weekend	Start up of CT Conservation Corps that will also work on multi-use trails on State Property; Trails Weekend booklets, marketing, data collection; conservation easement research; walk book, trail educational materials for distribution, signage, Kiosks, maintenance equipment and materials; chainsaw training;	\$298,100.00
DEEP Forestry	Nehantic Multi-use Trail	Improvements to this washed out section of multi-use trail	\$79,350.00
DEEP State Parks	Larkin SPT Resurfacing, parking improvements and drainage repairs	Survey, design, materials and installation costs	\$200,000.00
DEEP State Parks	Gillette Castle Ped Bridge	Restoration of pedestrian bridge and trail at State Park.	\$250,000.00
DEEP State Parks	Statewide Trail Maintenance	Assessments; repairs to drainage; bridges; wayfinding; equipment; materials; parking; amenities (rest rooms, water, benches); communications/publications including maps.	\$379,300.00







# R. Bruce Donald, APBP

*bruce@greenway.org*

860.707.2888

**Tri-State Coordinator**



East Coast  
Greenway®  
ALLIANCE

**Chairman**

